

Requirements:

- 2000,2003 Server or XP Profession Works
- 500 MHZ PII Processor
- 128 Megs of Memory
- WorkSite Server 7.x or 8.x
- SQL Connectivity (from SQL CD, SQL tools are helpful but not necessary)
- All WorkSite databases managed must have identical: Custom1, and Custom2 tables

Features:

- ▶ Runs as a service, no client install necessary
- ▶ Supports unlimited number of databases, Groups & Users, Clients or Matters and supports UTC time
- ▶ No client software required
- ▶ Security change is applied automatically to all existing documents
- ▶ Single simple interface for all management
- ▶ Does not modify the Worksite schema

Pricing:

\$5,000* per server

\$500 per additional 100 user pack

\$500 per additional WorkSite Database

Annual Maintenance is calculated @ 18%

*Includes support for up to 5 WorkSite Databases and 100 users.

For Information Contact:

Donna Keys
 4426 Mountain Rd.
 Pasadena, MD 21122
 Phone: (202) 588-2000 x4109
 Fax: (410) 360-6052
 Email: dkeys@younts.com

Product Description

This product provides ethical screen protection for your WorkSite system. The Wall allows for unlimited protection by client/matter (Custom1/Custom2). This system allows you to deny or grant access to users or groups based on a custom field value, while supporting an unlimited number of databases. The Wall server component runs as a service on Windows 2000, 2003, or XP

The Wall is a utility designed to apply security to documents in order to establish ethical barriers in a WorkSite database.

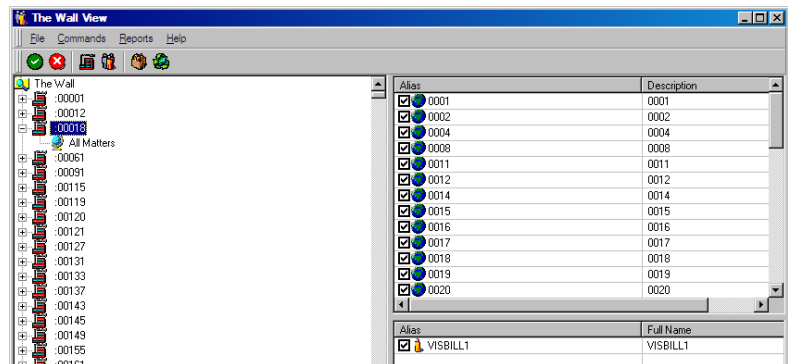
There are two primary components to the system:

- 1) Server based program, which scans a custom table called "thewall".
- 2) The WallView, which allows setting up ethical wall restrictions.

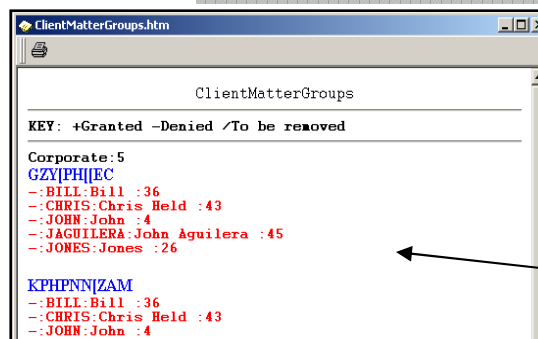
Installing The Wall module may allow your firm to lower its insurance premiums.

Hierarchy of Clients, Matters and Users or Groups assigned to them.

List of Matters selected to be assigned.



List of Users selected to be assigned.



Generate reports on Users or Groups that are in The Wall system.

Features in new release v1.5 include:

- ▶ Support for removing walls
- ▶ Right click refresh command to WallView tree
- ▶ WallView is much more efficient when dealing with a large number of matters
- ▶ SQL connection checks and improved error reporting on SQL connection errors
- ▶ Minor display bug fixes
- ▶ Re-secure all Walls command
- ▶ Updated Documentation - Added new best practices section